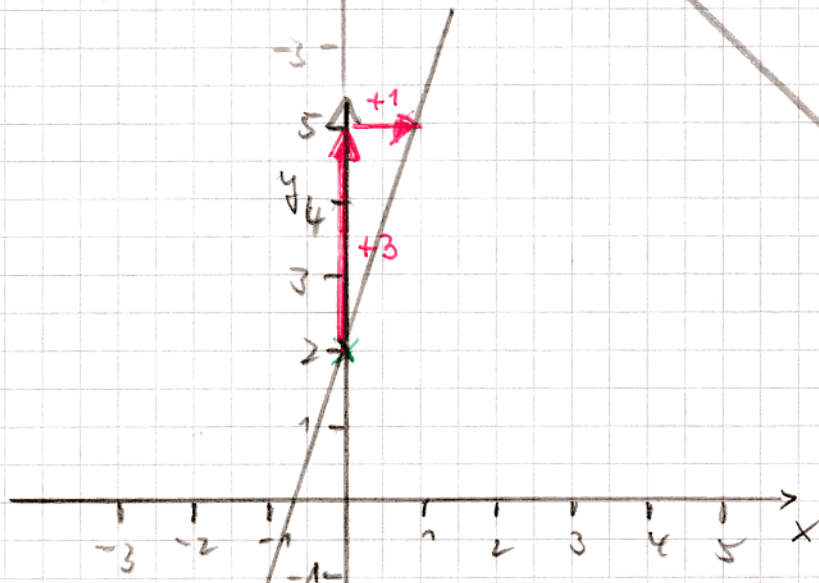
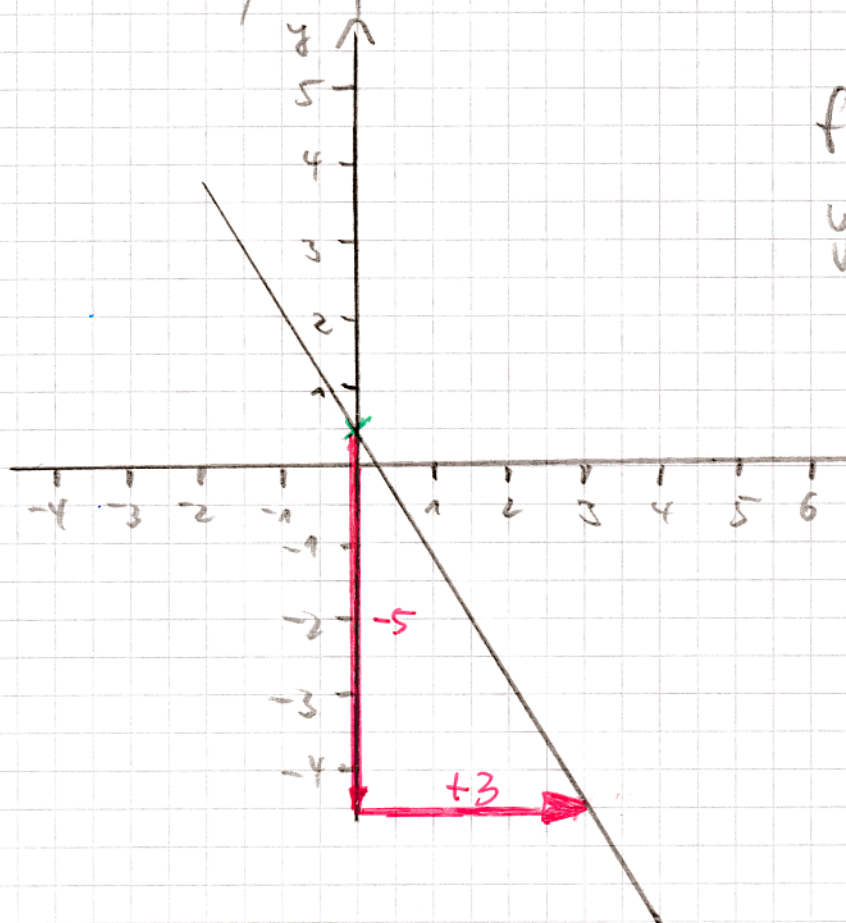


d.) $y = -1x + 2$
 $m = -1 = \frac{-1 \downarrow}{1 \rightarrow}$
 $n = +2$



e.) $y = 3x + 2$
 $m = 3 = \frac{3 \uparrow}{1 \rightarrow}$
 $n = +2$



f.) $y = -\frac{5}{3}x + \frac{1}{2}$
 $m = -\frac{5}{3} = \frac{-5 \downarrow}{3 \rightarrow}$
 $n = \frac{1}{2}$